



Certificate of Conformity

Certification Body:



**BUREAU
VERITAS**

Bureau Veritas Australia Pty Ltd
11/500 Collins Street
Melbourne VIC, 3000
Ph: 1800 855 190
www.bureauveritas.com.au

Certificate Holder:

BASROC

BASROC
2/86-92 South Park Drive
Dandenong South VIC 3175
Ph: 03 7009 7379
www.basroc.com.au

Certificate number: CM70139 Rev1

THIS TO CERTIFY THAT

BASROC 50mm Direct Fix and Cavity Fix External Wall Cladding Systems

Type and/or use of product:

The BASROC 50mm Direct Fix External Wall Cladding System and the BASROC 50mm Cavity Fix External Wall Cladding System is an external cladding for use on timber or steel framing.

Description of product:

The BASROC 50mm Direct Fix External Wall Cladding System and The BASROC 50mm Cavity Fix External Wall Cladding System consist of a 50mm Mineral Wool Panel with reinforcement mesh attached to both faces of the panel which can be mechanically fixed to either steel or timber wall framing.

COMPLIES WITH THE FOLLOWING BCA PROVISIONS AND STATE OR TERRITORY VARIATION(S)

BCA 2022

BCA 2022	VOL 1	VOL 2
Performance Requirements	B1P1(1), limited to (2)(c) F3P1	H1P1(1) limited to (2)(c) H2P2 H7D4(2)(a)
Deemed to Satisfy	C2D2, including S5C1 – subject to conditions and limitations. C2D9, including Specification 6 C2D10(1)(a) G5D3 J4D2, as much as it forms part of a system as required by and contributes to J4D6	9.2.3(2)(a) 13.2.1(1), as much as it forms part of a system as required by and contributes to 13.2.5
State Variations	NSW G5D3 – subject to design requirements in the Planning for Bush Fire Protection manual. NSW J4D2, as much as it forms part of a system as required by and contributes to NSW J4D6	NSW H7D4 – subject to design requirements by Planning for Bush Fire Protection NSW 13.2.5 – contributes to NT 13.2.2 as much as it forms part of a system as required by and contributes to NT 13.2.5 TAS 13.2 is replaced by BCA 2019

Sam Guindi – Product Certification Manager
Bureau Veritas Australia Pty Ltd

Harley Parkes – Unrestricted Building Certifier
[McKenzie Group Consulting](#)

Date of issue: 2 March 2023

Date of revalidation: xx February 2024

Date of expiry: 2 March 2026



SUBJECT TO THE FOLLOWING LIMITATIONS AND CONDITIONS AND THE PRODUCT TECHNICAL DATA IN APPENDIX A AND EVALUATION STATEMENTS IN APPENDIX B

Limitations and conditions:

1. BASROC Cavity and Direct Fix systems shall be installed in accordance with the BASROC 50mm Direct Fix External Wall Cladding System installation manual V1.3 (dated November 2023) or BASROC 50mm Cavity Fix External Wall Cladding System installation manual V1.1 (dated January 2024) as applicable.
2. BASROC Cavity and Direct Fix systems are permitted for use in Bushfire Prone Areas up to and including BAL-FZ when constructed in accordance with AS3959-2018.
3. The BASROC External Wall Cladding Systems are not suitable for use in cyclonic wind regions.
4. BASROC External Wall Cladding Systems are not designed to act as wall bracing. Bracing resistance shall be provided by the wall framing.
5. wall framing.
6. BASROC 50mm External wall Cladding systems have been tested and assessed to AS1530.4 and can achieve an FRL of up to 90/90/90 when installed with other building materials as detailed in Warringtonfire Fire assessment report FAS210394 Rev 1.3, dated 09 November 2023. An assessment must be undertaken to ensure the correct system is used to achieve the desired FRL.
7. BASROC External Wall Cladding Systems are non load-bearing and control joints shall be required at regular intervals to allow for building movement, as stipulated within BASROC 50mm Direct Fix External Wall Cladding System installation manual V1.3 (dated November 2023) or BASROC 50mm Cavity Fix External Wall Cladding System installation manual V1.1 (dated January 2024) as applicable.
8. Breathable (vapour permeable) sarking (minimum Medium Duty) complying with AS/NZS 4200.1-2017 shall be installed in accordance with AS 4200.2-2017.
9. All fixtures and architectural features attached to the wall shall be secured into the wall framing complying with AS1684 for timber frame and the NASH standard for steel framing.

Building classification/s:

Volume 1 – Class 2 to Class 9 buildings
Volume 2 – Class 1 and Class 10a buildings

Scope of certification: The CodeMark Scheme is a building product certification scheme. The rules of the Scheme are available at the ABCB website www.abcb.gov.au. This Certificate of Conformity is to confirm that the relevant requirements of the Building Code of Australia (BCA) as claimed against have been met. The responsibility for the product performance and its fitness for the intended use remain with the certificate holder. The certification is not transferrable to a manufacturer not listed on Appendix A of this certificate.

Disclaimer: The Scheme Owner, Scheme Administrator and Scheme Accreditation Body do not make any representations, warranties or guarantees, and accept no legal liability whatsoever arising from or connected to, the accuracy, reliability, currency or completeness of any material contained within this certificate; and the Scheme Owner, Scheme Administrator and Scheme Accreditation Body disclaim to the extent permitted by law, all liability (including negligence) for claims of losses, expenses, damages and costs arising as a result of the use of the product(s) referred to in this certificate.

APPENDIX A – PRODUCT TECHNICAL DATA

A1 Type and intended use of product

As above.

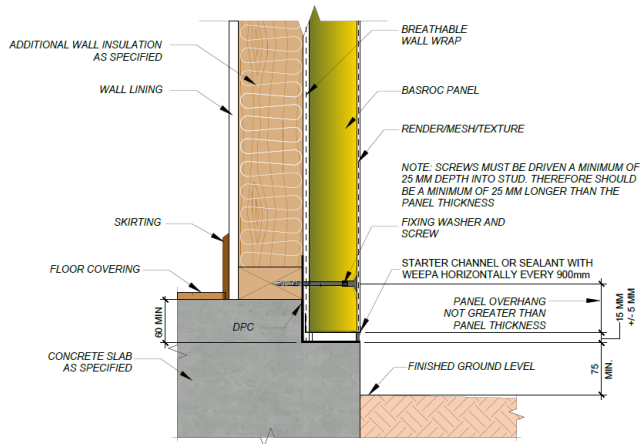
A2 Description of product

As above.

A3 Product specification

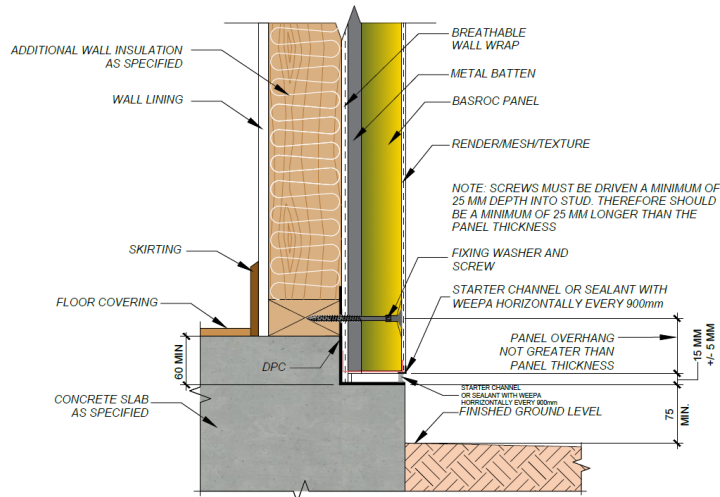
BASROC Direct-Fix External Wall Cladding System

Concrete Slab Rebate - Direct Fix



BASROC Cavity-Fix External Wall Cladding System

Concrete Slab Rebate - Cavity Fix



Key elements of the system as shown in figure above include:

- BASROC Panel 2200 x 600 x 50 mm, 160kg/m³ mineral wool with reinforcing to both sides
- BASROC Flashing Tape



Certificate of Conformity

- Breathable reflective or non-reflective sarking
- BASROC Aluminium or PVC Starter Channel in U-shape or L-shape
- BACROC Aluminium or PVC external angles
- BASROC Joint Adhesive
- BASROC Fibreglass Mesh 5 x 5 mm, 160 gsm
- BASROC Panel Render
- BASROC Texture
- Sealant, an intumescent, low modulus, one component and Class A polyurethane sealant
- Metal Flashing.

Further comprehensive construction details and installation requirements are provided in;

- BASROC 50mm Direct Fix External Wall Cladding System installation manual V1.3 (dated November 2023)
- BASROC 50mm Cavity Fix External Wall Cladding System installation manual V1.1 (dated January 2024)

Warringtonfire report FA210394 R1.2 Table 2 Formal Assessment Summary:

Note: this table is a summary only and shall be read in conjunction with the Warringtonfire, Fire resistance test report, Fire Resistance Level based on AS 1530.4-2014, Report No. FAS210394 R1.2, 10 August 2023 and Rev1.3 dated 09 Nov 2023.

Table 2 Formal assessment summary

Wall framing Stud size	Spacing (mm)	Exposed side Basroc® panel lining thickness	Unexposed side lining	Loading per stud (kN)	FRL (One-way)
90 × 45 mm MGP10	450 or 600	50	1 × 10 mm standard grade plasterboard	7.0	30/30/30
		50		5.2	60/60/60
		50		1.25	90/90/90
		50		N/A	-/90/90
90 × 35 mm MGP10	450 or 600	50	1 × 10 mm standard grade plasterboard	5.0	30/30/30
		50		3.0	60/60/60
		50		N/A	-/90/90
70 × 45 mm MGP10	450 or 600	50	1 × 10 mm standard grade plasterboard	3.5	30/30/30
		50		2.5	60/60/60
		50		N/A	-/60/60
Minimum 92 mm deep, 0.75 mm BMT	450 or 600	50	1 × 10 mm standard grade plasterboard	N/A	-/60/60
Minimum 76 mm deep, 0.75 mm BMT	450 or 600	50	1 × 10 mm standard grade plasterboard	N/A	-/60/60
Minimum 64 mm deep, 0.75 mm BMT	450 or 600	50	1 × 10 mm standard grade plasterboard	N/A	-/60/60

Timber or steel battens may optionally be used vertically over the studs to increase the overall wall thickness without compromising the assessed performance.



Certificate of Conformity

A4 Manufacturer and manufacturing plant(s)

BASROC Pty Ltd – 2/86-92 South Park Drive Dandenong South VIC 3175

A5 Installation requirements

- BASROC 50mm Direct Fix External Wall Cladding System installation manual V1.3 (dated November 2023)
- BASROC 50mm Cavity Fix External Wall Cladding System installation manual V1.1 (dated January 2024)

A6 Other relevant technical data

N/A

APPENDIX B – EVALUATION STATEMENTS

B1 Evaluation methods

BCA 2022

1. **Structural Assessment**

A2G2(2)(a)/A5G3(1)(d) – A report issued by an Accredited Testing Laboratory (Ian Bennie & Associates)

A2G2(2)(a)/A5G3(1)(e) – A certificate or report from a professional engineer or other appropriately qualified person (Acronem Consulting Australia)

2. **Fire Resistance Assessment**

A2G3(2)(a)/A5G3(1)(d) – A report issued by an Accredited Testing Laboratory (Warringtonfire)

A2G3(2)(a)/A5G3(1)(e) – A certificate or report from a professional engineer or other appropriately qualified person (Acronem Consulting Australia & Warringtonfire)

3. **Lightweight Construction Assessment**

A2G3(2)(a)/A5G3(1)(d) – A report issued by an Accredited Testing Laboratory (Ian Bennie and Associates & Melbourne Testing Services)

A2G3(2)(a)/A5G3(1)(e) – A certificate or report from a professional engineer or other appropriately qualified person (Acronem Consulting Australia)

4. **Non-combustibility Assessment**

A2G3(2)(a)/A5G3(1)(d) – A report issued by a NATA accredited testing facility. (Warringtonfire)

A2G3(2)(a)/A5G3(1)(e) – A report from a professional engineer (Acronem Consulting Australia).

5. **Weatherproofing Assessment**

A2G2(2)(a)/A5G3(1)(d) – A report issued by an Accredited Testing Laboratory (Ian Bennie & Associates)

A2G2(2)(a)/A5G3(1)(e) – A report from a professional engineer (Acronem Consulting Australia)

6. **Bushfire Construction Assessment**

A2G3(2)(a)/A5G3(1)(d) – A report issued by a NATA accredited testing facility. (Warringtonfire)

A2G3(2)(a)/A5G3(1)(e) – A report from a professional engineer (Acronem Consulting Australia).

7. **Energy Efficiency Assessment**

A2G3(2)(a)/A5G3(1)(d) – A report issued by an Accredited Testing Laboratory (AWTA Product Testing)

A2G3(2)(a)/A5G3(1)(e) – A report issued by a Professional Engineer (Acronem Consulting Australia).

B2 Reports

- 1. Ian Bennie and Associates – 50mm BASROC panel with fixing @ 250c/c fixed to 90 x 45 studs @ 600 c/c - Static ultimate wind load tests to AS4040.2 (Vert. joints on-stud) for Basroc Pty Ltd, dated June 2021.**
This report is a performance-based solution via a verification method providing justification for the BASROC Panel External Wall Cladding System for system wind strength, 50mm thick panel.
- 2. Ian Bennie and Associates – 50mm BASROC panel with fixing @ 500c/c with a vertical panel joint between 2 studs non back blocked fixed to 90 x 45 studs @ 600 c/c - Static ultimate wind load tests to AS4040.2 (Vert. joints off-stud) for Basroc Pty Ltd, dated June 2021.**
This report is a performance-based solution via a verification method providing justification for the BASROC Panel External Wall Cladding System for system wind strength, 50mm thick panel.
- 3. Warringtonfire, Fire resistance test report, Fire Resistance Level based on AS 1530.4-2014, Report No. FRT210199 R1.2, (dated 7th December 2021).**
This report provides the results of testing to AS 15320.4.1:2014 and specifies that the BASROC Panel & BASROC render system in a test on a loadbearing wall achieved a Fire Resistance Level (FRL) of 60/60/60.
- 4. Warringtonfire, Fire resistance test report, Fire Resistance Level based on AS 1530.4-2014, Report No. FAS210394 R1.2, (dated 10th August 2023).**
This report provides the results of the assessment undertaken to determine the fire resistance levels (FRL) capable of being achieved by various loadbearing and non-loadbearing BASROC steel and timber framed walls IAW AS 1530.4:2014.
- 5. Ian Bennie and Associates – Impact Test NCC Vol. 1 Specification C1.8 – Impact 50 mm BASROC Panel, Test Report No. 2022-049 (dated June 2022).**
This report provides the results of ASTM E695-79 impact test modified to the requirements of NCC Vol 1 Specification C1.8. the result confirms that the 50 mm BASROC panel passed the dynamic test requirements.
- 6. Melbourne Testing Services – Surface Indentation Testing NCC Vol. 1 Specification C1.8 – 50 mm BASROC Panel, Test Report No. 22-0861 (dated 19 August 2022).**
This report provides the results of Surface Indentation testing to the requirements of NCC Vol 1 Specification C1.8 Clause 6(E). The result confirms that the 50 mm BASROC panel passed the Surface Indentation testing requirements.
- 7. Warringtonfire, Reaction to fire test report, Testing to AS1530.1-1994 BASROC Panel, Report No. RTF210467 R1.0 (dated 15th December 2021).**
This report documents the findings of the reaction to fire test Basroc Panel in accordance with AS1530.1 – 1994. Test results confirm that the BASROC Panel is not deemed combustible according to the criteria for combustibility specified in AS 1530.1.
- 8. Ian Bennie and Associates – 50 mm Chase Basalt Panel External Wall Cladding System – Direct Fixed NCC 2019 Verification Methods FV1 and V2.2.1, Test Report No 2018-089-S8 (dated December 2019)**
This report is a performance-based solution via a verification method providing justification for the Chase Basalt Panel External Wall Cladding System Direct Fix for weatherproofing purposes.
- 9. Ian Bennie and Associates – Chase EPS Panel External Wall Cladding System – Direct Fixed NCC 2016 Verification Methods FV1 and V2.2.1, test Report NO. 2018-89-S1 (Dated March 2019).**
This report is a performance-based solution via a verification method providing justification for the Chase EPS Panel External Wall Cladding System Direct Fix for weatherproofing purposes.

10. AWTA Product Testing – BASROC Panel Insulation Batt, Thermal Conductivity and Thermal Resistance calculated in accordance with AS4859.1-2018

11. Acronem Consulting, BASROC 50mm Direct Fix External Wall Cladding System, Steel Frame Calculation of Thermal Performance for Vapour Permeable Reflective & Non-Reflective Sarking (0.9/0.03)

12. Acronem Consulting, BASROC 50mm Direct Fix External Wall Cladding System BCA Volume 1 & 2 Appraisal – Report # ACA-220131 (dated 1st September 2022).

This appraisal finds that the BASROC 50mm Direct Fix External Wall Cladding System complies with NCC 2019 Volume 1 & 2 following requirements.

- BP1.1 & P2.1.1
- FP1.4 & P2.2.2
- C1.1 inter alia Spec C1.1 & 3.7.2.4(b)
- C1.8 inter alia Spec C1.8
- C1.9
- G5.2 & 3.10.5.0 (c)
- J1.5 & 3.12.1.4

13. Acronem Consulting, BASROC 50mm Cavity Fix External Wall Cladding System NCC 2022 Volume 1 & 2 Appraisal – Report # ACA-231120 (dated 18 December 2023).

This appraisal finds that the BASROC 50mm Direct Fix External Wall Cladding System complies with NCC 2019 Volume 1 & 2 following requirements.

- B1P1 & H1P1
- F3P4 & H2P2
- Specification 5 and 9.2.3(2)
- C2D9
- C2D10
- G5D3 & H7D4(2)
- J4D6 and 13.2.5

14. Warringtonfire Fire assessment report FAS210394 Rev 1.3, dated 09 November 2023

This report provides the assessment of BASROC panels when installed with other building elements, and determines that the product is capable of achieving an FRL of up to 90/90/90